

Spotlight 30 RGBW Power IP68



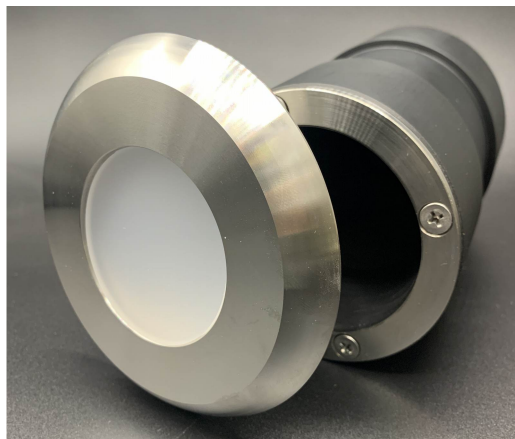
Spot Led in acciaio Aisi 316 resinato IP68.
Resistente all'acqua anche clorata o salata.
Adatto per piscine, docce, fontane

**Disponibile in versione stand-alone o con
controcassa**

Corpo: Acciaio AISI 316
Controcassa: PVC
Vetrino: Polimetilmetacrilato opalino
Resina: Poliuretana (PUR)
Pressacavo: ottone nichelato
Cavo: Olfelx Robust
Optional: rivestimento con pellicole colorate
ad alta resistenza.

Bianco / White

| | |
|------------------------------|----------------|
| Potenza / Power: | 11 W/mt |
| N. Led / No. Led: | 28 doppio chip |
| Temp. Colour: | 2700K / 5000K |
| Lumen: | 1280 lm |
| Angolo / Beam angle: | 120° |
| Temp. Lavoro / Working temp: | -20°C +80°C |
| Vita Utile / Life: | 80.000 h |
| Volts: | 24 Vdc |



*Led Spotlight IP68 in stainless steel Aisi 316.
Water resistat, chlorine and salt water too.
Suitable for pools, showers, fountains.*

**Available in version stan-alone or with
outercase**

*Body: Stainless Steel AISI 316
Outercase: PVC
Glass: Polimetacrilate Opalin
Resin: Polyurethane resin (PUR)
Gland: nichel brass
Cable: Olfelx Robust
Optional: wrapping with premium quality
coloured film*

RGBW

| | |
|------------------------------|--------------|
| Potenza / Power: | 18 W/mt |
| N. Led / No. Led: | 14 power led |
| Temp. Colour: | RGBW |
| Lumen bianco / white: | 900 lm |
| Lumen rosso / red: | 190 lm |
| Lumen blu / blue: | 210 lm |
| Lumen verde / green: | 535 lm |
| Angolo / Beam angle: | 120° |
| Temp. Lavoro / Working temp: | -20°C +80°C |
| Vita Utile / Life: | 80.000 h |
| Volts: | 24 Vdc |



100%
made in italy



LUX INTERNATIONAL S.r.l.s.